



Build your career with CS Energy

At CS Energy, we're big enough to power change, and small enough to empower you to make it happen.

We're committed to creating a work environment that allows our people to explore new ways of thinking and working – and we're seeking like-minded candidates to join us on our journey.

Who are we?

Established in 1997, CS Energy is a proudly Queensland-owned and based energy company that provides power to some of our state's biggest industries and employers. We generate and sell electricity in the National Electricity Market, and are an energy retailer to large commercial and industrial businesses. We're also investing in new energy technologies to continue to **deliver energy today, and power your tomorrow.**

Where are we?

Our workforce is spread across three primary locations: Callide Power Station near Biloela in the Banana Shire; Kogan Creek Power Station near Chinchilla in the Western Downs; and our corporate office in Brisbane.

With the majority of our people living locally in the communities in which we operate, we pride ourselves on being a truly regional business, and support the lifestyles and amenities of our people and regions through our Community Sponsorships Program.

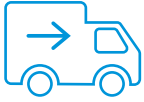


Careers at CS Energy
www.csenergy.com.au/careers

What's in it for you:



Attractive remuneration including above award superannuation



Relocation assistance



Education assistance



Holiday travel scheme



Housing assistance

Creating career pathways

CS Energy is committed to the ongoing learning and development of its people, and offers opportunities to forge career paths within the business – whether that's continuing on the path you're already on, or opening the door to an entirely new one you may be interested in. Read more about how some of our people are developing their careers within the business below.



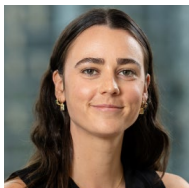
Tom Watson

Born and raised in Chinchilla, Tom Watson always knew he wanted to work with his hands. Starting as an apprentice at Kogan Creek Power Station in 2021, he's since graduated, accepted a permanent role, and is also mentoring new apprentices.



Hayley Trevithick

Starting as a mechanical apprentice at Callide Power Station in 2023, Hayley's taken the opportunities CS Energy has offered to develop her skills and won gold for Queensland at the 2025 WorldSkills regional competition.



Ally Dobson

Graduate Mechanical Engineer Ally Dobson was attracted to the broad range of hands-on experience CS Energy's graduate program offers, including rotations at our power stations which have different operating systems; and the opportunity to work on renewables and firming assets.

Follow us on social media to keep an eye out for opportunities



LinkedIn



Facebook



Instagram

We're committed to increasing Aboriginal and Torres Strait Islander employment, and encourage Indigenous applicants to apply.