

# Wivenhoe Power Station

<b>Location</b>	Wivenhoe Pocket via Fernvale, in South East Queensland
<b>Capacity</b>	570 MW for 10 hours
<b>Fuel</b>	Pumped storage hydroelectric
<b>Employees</b>	13 employees



CS Energy is a Queensland government owned corporation and a major wholesale provider of electricity in Australia. We employ almost 500 people and have a trading portfolio of 4,105 megawatts in the National Electricity Market (NEM).

CS Energy operates the 1,510 megawatt Callide Power Station near Biloela in Central Queensland, the 750 megawatt coal-fired Kogan Creek Power Station, near Chinchilla in South West Queensland, and the 570 megawatt pumped storage hydroelectric Wivenhoe Power Station, near Esk in South East Queensland. The Kogan Creek Mine also forms part of CS Energy's portfolio of assets.

## Wivenhoe Power Station

Wivenhoe Power Station is the only pumped storage hydroelectric plant in Queensland. This strategic asset in CS Energy's portfolio provides fast ramping capability.

Wivenhoe's two 285 MW units are the largest hydromachines in Australia, weighing 1,500 tonnes each.

Electricity is generated, absorbed and stored at Wivenhoe Power Station by recycling water between a lower reservoir (Wivenhoe Dam) and upper reservoir (Splityard Creek Dam).

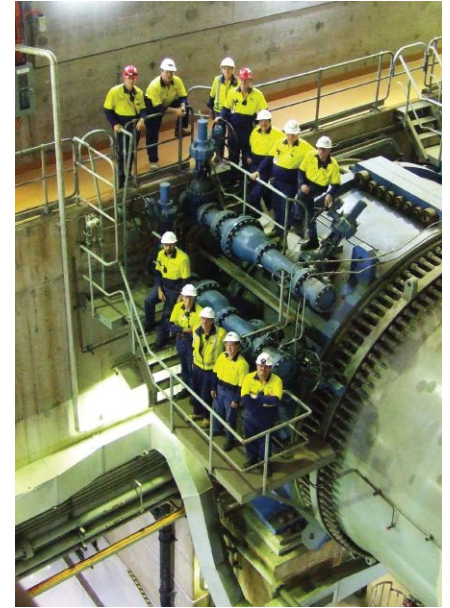
Using electricity from the grid, Wivenhoe Power Station pumps water from Wivenhoe Dam up into Splityard Creek Dam. The water is then released from Splityard Creek Dam through tunnels back to the power station to drive the turbines and generators to produce electricity. In this way, Wivenhoe Power Station works like a giant rechargeable battery.

Commissioned in 1984, the power station has an expected life of up to 100 years.

View a virtual tour of Wivenhoe Power Station at

<http://www.seqwater.com.au/education/virtual-tour/wivenhoe-dam>

- 1 Callide Power Station  
near Biloela in Central Queensland
- 2 Kogan Creek Power Station  
near Chinchilla in South West Queensland
- 3 Wivenhoe Power Station  
near Fernvale in South East Queensland



## Environmental Management System

CS Energy manages the environmental impact of our activities through a comprehensive Environmental Management System (EMS) at each of our power stations.

The EMS assists us in monitoring environmental performance and integrates environmental management into daily operations, long term planning and quality management systems.

## Water management

As Wivenhoe Power Station reuses water by recycling it between an upper and lower reservoir, it is a highly water efficient plant. In 2014/15, Wivenhoe Power Station consumed just 0.2 megalitres.

## Emissions

CS Energy reports its greenhouse emissions, energy consumption and energy production to the Australian Government under the National Greenhouse and Energy Reporting (NGER) Scheme. CS Energy's NGER data is published on the Clean Energy Regulator website at [www.cleanenergyregulator.gov.au](http://www.cleanenergyregulator.gov.au).

Under the National Pollutant Inventory, CS Energy reports on the oxides of nitrogen (NOx) and sulphur (SOx) that it emits from its power stations to the Department of the Environment. CS Energy's NOx and SOx data is available on the National Pollutant Inventory website at [www.npi.gov.au](http://www.npi.gov.au).

## Careers

CS Energy employs almost 500 people across our power stations and Brisbane Office. For information about careers at CS Energy, visit our website at [www.csenergy.com.au](http://www.csenergy.com.au)

